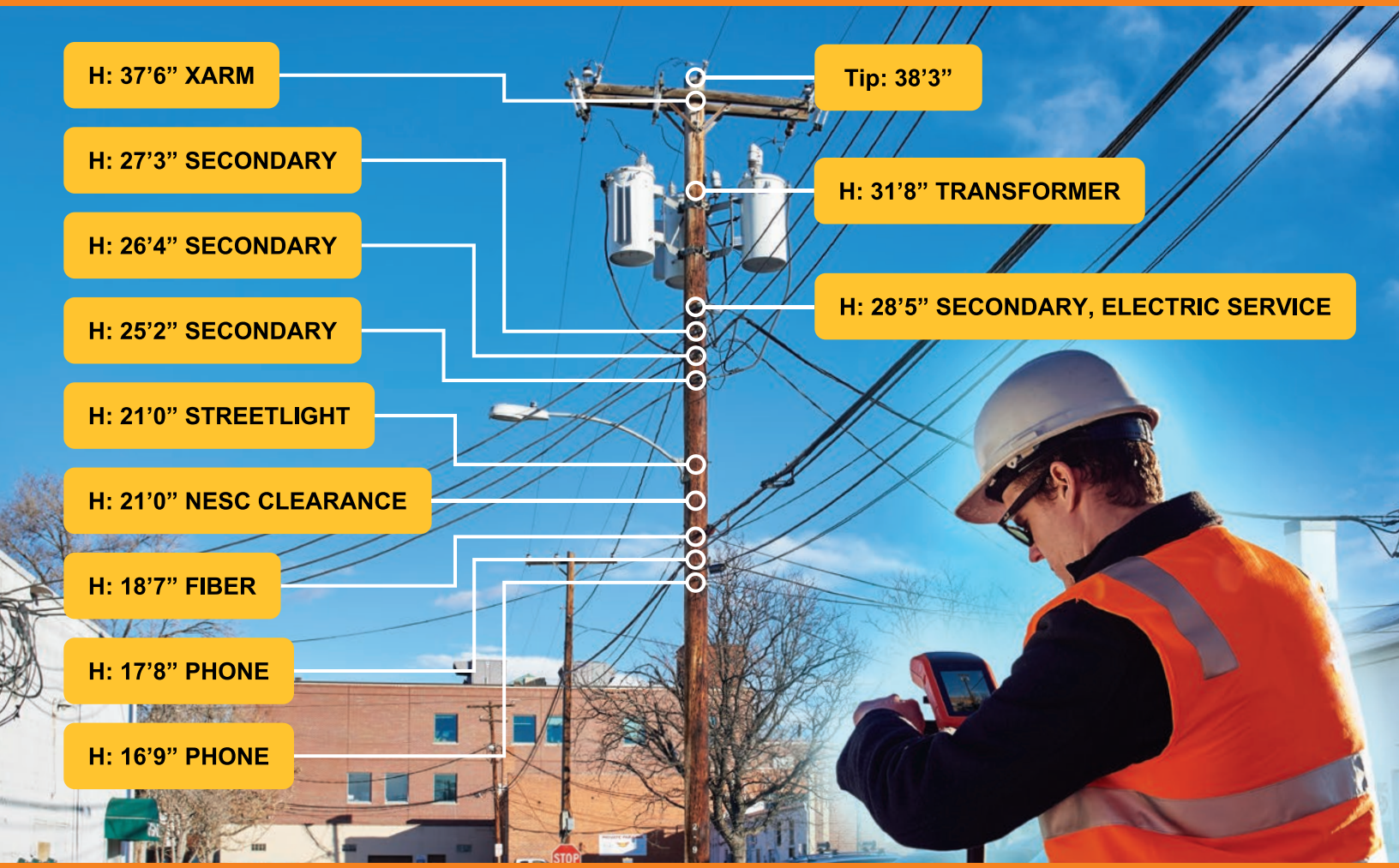


IKE 4 - Product Specifications

THE EVOLUTION OF POLE MEASUREMENTS



IKE is the fourth-generation field data collection solution supporting the utility, communication and engineering service communities. The IKE 4 device incorporates Android mobile technologies to produce a best-in-class high-performance, lower-power field data collection solution.

Core benefits include:

- Increased field data collection efficiency - collecting data faster.
- Lower acquisition costs - costs per pole is significantly reduced.
- Open data format - faster and easier to integrate data with other applications, GIS and pole loading.
- Easy to use - familiar smartphone user interface and experience.



IKE 4 Technical Specifications

Laser Range Finder													
Class	Class 1M (Class 1 IEC60825-1, 3rd Ed and Class 1M accessible emission limits for CDRH requirements per Laser Notice 50)												
Range	300m and 650m												
Wavelength	905nm												
Accuracy	+/- 5cm RMS (at 15m to neutral target)												
GNSS													
Receiver	56 Channels, GPS L1C/A, SBAS												
Typ Horiz Position Accuracy (CEP, >6 SVs)	<ul style="list-style-type: none"> ➤ Autonomous 2.5m ➤ SBAS 2.0m ➤ PPP < 1.0m (Using WAAS) 												
Time to First Fix	<ul style="list-style-type: none"> ➤ Cold Start 30s ➤ Warm Start 28s ➤ Hot Start 1s 												
Local Position	<table border="1"> <thead> <tr> <th></th> <th>GPS</th> <th>GLONASS</th> </tr> </thead> <tbody> <tr> <td>Accuracy Position:</td> <td>2.5 m CEP</td> <td>4 m</td> </tr> <tr> <td>SBAS:</td> <td>2.0 m CEP</td> <td>n.a</td> </tr> <tr> <td>SBAS + PPP:</td> <td>< 1 m CEP</td> <td>n.a.</td> </tr> </tbody> </table>		GPS	GLONASS	Accuracy Position:	2.5 m CEP	4 m	SBAS:	2.0 m CEP	n.a	SBAS + PPP:	< 1 m CEP	n.a.
	GPS	GLONASS											
Accuracy Position:	2.5 m CEP	4 m											
SBAS:	2.0 m CEP	n.a											
SBAS + PPP:	< 1 m CEP	n.a.											
Camera													
Resolution	<ul style="list-style-type: none"> ➤ 13 Megapixel using native Camera application (3120 x 4160) ➤ 10 Megapixels within IKE application (10% reduction 2808 x 3744 for laser alignment) 												
Field of View Within IKE Application	vertical: 57°, horizontal: 44° (after 10% reduction)												
Digital Zoom	1x to 10x												
Others	<ul style="list-style-type: none"> ➤ LED Flash and Torch ➤ Autofocus 												
Inertial Measurement Unit (IMU)													
Sensors	9 axis IMU												
Relative Angle Accuracy	1° RMS												
Magnetic Heading Accuracy	2° RMS												
Pitch / Roll Accuracy	0.5° RMS												
Camera													
Processor	MediaTek MT6735 Quad Core ARM Cortex-A53 1.2-1.5GHz 64-bit processor.												
Memory & Data Storage	2GB DDR3 (RAM), 16 GB on-board NAND (ROM) – extensible with micro SD Card compatible up to 32 GB												
Operating System	Android™ 5.1, (Lollipop)												
LCD Screen	4.8" (1280x720), sunlight readable (Blanview), capacitive multi-touch												
Touchscreen	Corning Gorilla glass, optically bonded to LCD, reducing reflectivity. Optimized for outdoor readability.												
Brightness:	300+ cd/m2												
I/O	<ul style="list-style-type: none"> ➤ 1 - DC charging port ➤ 1 - USB 2.0 port for charging and data (mass storage and connection to PC) 												
Audio	Integrated Audio and Microphone												
SD	One micro SD card slot. (SD card not included)												
Network Connectivity													
Integrated Communication Modules	<ul style="list-style-type: none"> ➤ Wireless 802.11b/g (2.4GHz), 802.11a/n (5GHz) ➤ Bluetooth® 4.1 (low energy, smart) 												

Power Management	
Battery	Internal Lithium-Ion Polymer, 3.7 V, 8200mAh battery
AC Charger	<ul style="list-style-type: none"> ➤ Input: 100 - 240 V AC, 50 - 60 Hz; output: 5.0V DC, 3A ➤ Charging through either a 'fast charge' AC adapter that plugs into a dedicated power jack, or through a micro USB 2.0 cable at a slower charge rate.
Operating Time	<ul style="list-style-type: none"> ➤ Eight to ten hour battery life (*under typical usage) ➤ User Replaceable, not hot-swappable.
Charging Time	4 hours to 80%, full charge 6 hours. (using the power jack input)
Physical Specifications	
Size	Length: 269mm, Width: 100mm, Height: 64mm
Weight	<880 g including battery
Ingress Protection	IP54. Protected against dust, limited ingress, and against water spray from all directions, limited ingress
Operating Temperature Range	-10°C to +60°C
Storage Temperature Range	-10°C to +60°C, long term battery storage -10°C to +45°C
Humidity	85% non-condensing
Accessories and Software	
Accessories	<ul style="list-style-type: none"> ➤ Hard carry case ➤ Tripod set ➤ Battery chargers (AC, car) ➤ USB cables
Software	<ul style="list-style-type: none"> ➤ IKE Field - Android mobile app for field data collection ➤ IKE Office - Cloud-based software for data management, photo measurement and standard output ➤ IKE Integration - Output to 3rd party software



Need a demonstration of IKE 4?

Call or contact us through our website

www.ikegps.com

For assistance or questions, please contact:

Customer Support

Phone: +1 720 381 1634

Toll-free: +1 844 445 3477 ext 3

Email: support@ikegps.com

6:00 am to 6:00 pm (UTC -07:00)

Monday - Friday (Closed on major US holidays)

IKE3-508-16-01-1.0



Get the measure of your world

350 Interlocken Boulevard, Suite 390

Broomfield, CO 80221

+1 303-222-3218