

GE MapSight Tech Tip

Copying Files From Your SD Card



The easiest way to copy files from the GE MapSight Device to your computer is by using a USB Interface cable (USB mini to USB standard) and GE MapSight Desktop software. However, if you need to copy the files directly from the SD card; you can use the SD card slot in your computer and File Explorer in Windows.

One benefit of using the SD card is that a Windows Mobile Device Manager or MapSight Desktop Software to download files. However, please be aware there are some disadvantages to copying the data directly from the SD card. These include:

- All files copied to the PC will require a manual file management process. They will no longer be automatically downloaded into your MapSight data directory.
- MapSight forms cannot be deployed to your MapSight device without using a USB Cable.

Also please remember, when returning the SD card to the MapSight device, it is important to install properly to ensure data is saved to the SD card...not the memory on the device.

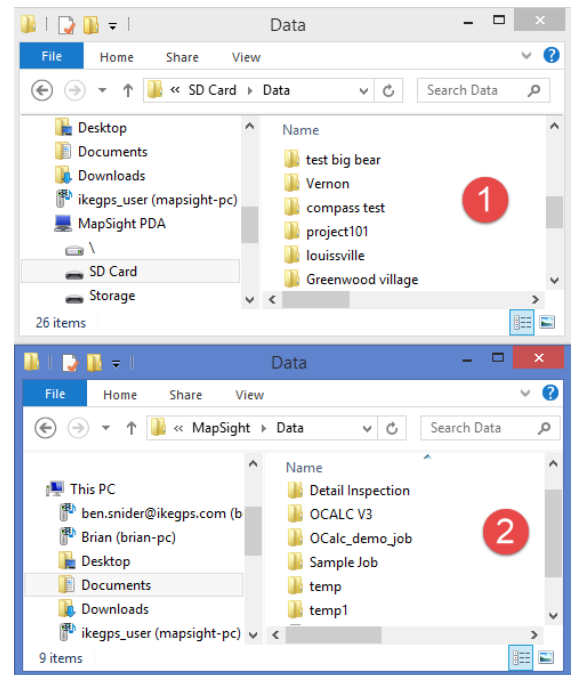
The SD card sits in slot above the screen of your MapSight Device. Remove the cover by undoing the screw, (a coin makes a good screwdriver). Release the SD card by gently pressing the SD card towards the screen and it should pop out.



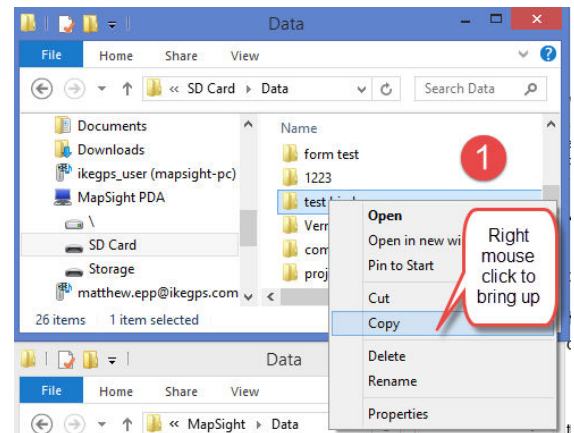
Place the SD card into the appropriate slot on your computer or use a card reader and connect it to the PC.



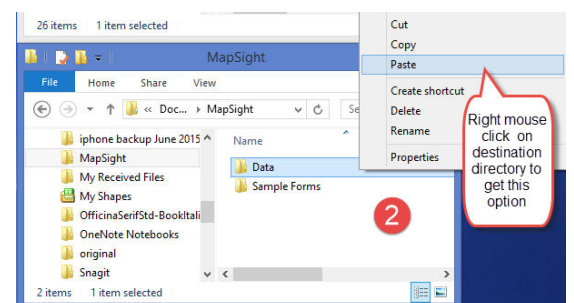
The File Explorer icon may be part of your task bar normally at the bottom of your screen or on your desktop, if not select it under the programs or apps area depending on which version of Windows you are using.



In the first File Explorer, to copy the files, go to **<This PC/PDA/SD Card/Data/Job directory>** right mouse click select copy (or **<Ctrl C>**).

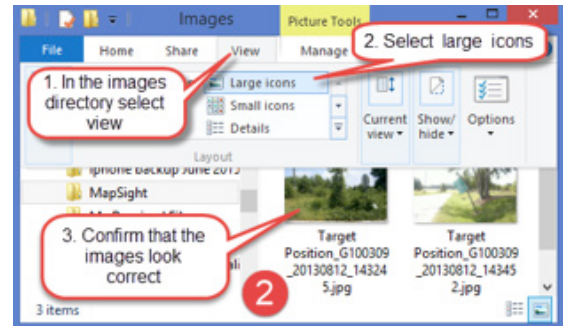


In the second File Explorer data directory, **<Documents/MapSight/Data>** (, to paste the job files right mouse click select paste (or **<Ctrl V>**).



Check that all the files have been copied. In the data directory (or destination directory) on your computer (File Explorer 2) there should be the job file directory which has an ike directory and an images directory.

In the images directory select **<view>** pull down menu and **<large icons>**. Check that all the images look correct.



For more information, contact us at support@gemapsight.com, or visit our support at our website www.gemapsight.com
+1 720 381 1634 (direct dial)
+1 844 445 3477 ext 3 (toll free)
Hours: Mon-Fri 8am-5pm MST



is a trademark of General Electric Company
and is under license by ike^{GPS} LTD
42 Adelaide Road, Wellington 6021, New Zealand