

# OSHA 1910.268 for Communication Line Workers

(Presented online or in-person at your organization)

## Benefits of IKE's NESC® and OSHA training courses



### Save time and money

Save on travel time and out-of-office expenses



### Training together

Entire departments can be trained together



### Designed for your needs

The presentation can be designed to meet the needs of your organization



### Train on your schedule

Our training schedule can be modified to meet your team's needs

## Class highlights

### Full OSHA Standards coverage

Covers all 15 paragraphs in the OSHA Standard 1910.268.

### Specifically designed classes

This class is designed for communication workers who want to be "qualified" to work on or around telecommunication lines and equipment or in joint use construction with electrical power facilities.

### Learn through practical application

Curriculum focused on practical examples such as photos and drawings to aid the understanding of OSHA's requirements.

### Up to date information

This class conforms to the current edition of OSHA 1910.268 standards.

# About the instructor



## Grant D. Glaus, P.E.

*NESC and OSHA Training Instructor, at ikeGPS*

Grant Glaus is a registered professional electrical engineer with an impressive 25 years of experience in Electric Utility Engineering, NESC, and OSHA training, and is now leading IKE's training programs. Grant brings vast knowledge and extensive background, including his role on the NESC Subcommittee 5 for Overhead Lines – Strengths and Loadings, and 15 years of experience supervising and managing the engineering department at Columbia Rural Electric Association. Before that, Grant worked with David Marne for ten years, providing consulting and NESC and OSHA training services.

# About the class

The *OSHA 1910.268 for Communication Line Workers* class consists of 15 modules and quizzes. Each module is followed by a quiz consisting of multiple-choice questions regarding materials covered in the module.

## During this class you will learn about:

- Training requirements in the OSHA 1910.268 Standards
- Safety rules
- Personal protective equipment
- Minimum Approach Distances
- Overhead communication/power lines
- Underground communication/ power lines
- Different types of equipment

---

## Continuing education units

This course provides 0.6 Continuing Education Units (CEUs) or 6 Professional Development Hours (PDHs). This class has not been registered with and State Licensing or Education Board.

## Who should attend?

Communication employees who want to be “qualified” to work on or around telecommunication lines and equipment alone or in joint use construction with electrical power facilities.

## Class format and learning methods

This class is presented either in-person or online and includes:

- Real time Q&A
- Curriculum focused on practical applications supported by examples, diagrams, and conversations
- Ample time for questions and class discussion

## Class objectives

Upon successful completion of this class attendees will be able to:

01

Understand the application, general requirements, and training requirements in the OSHA 1910.268 Standards.

02

Understand and apply the minimum approach distance requirements to power lines that are built joint use with communication lines.

03

Understand the safety rules related to employee protection and proper tool use.

04

Recognize the importance of selecting the proper personal protective equipment.

05

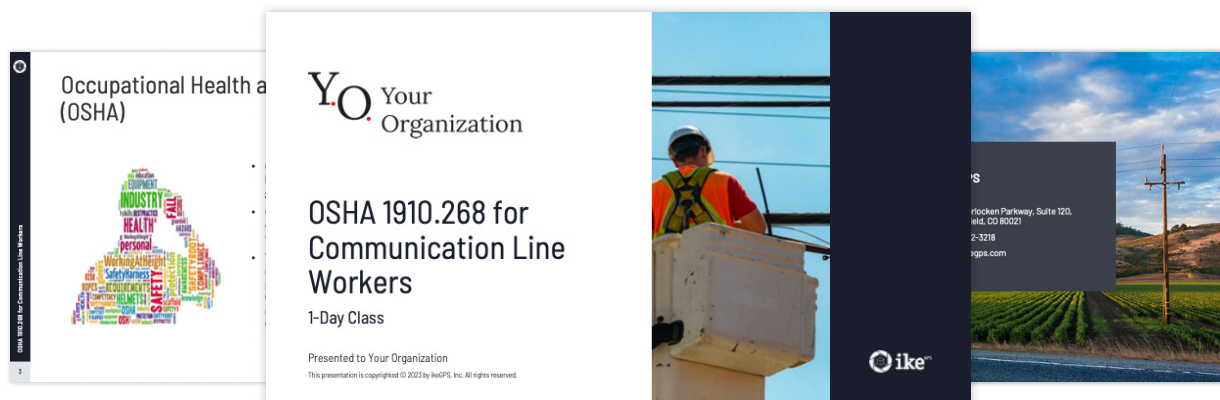
Apply the proper safety rules when working on communication lines and equipment.

06

Apply the safety rules related to working on grounding, overhead lines, tree trimming, and buried facilities.

## Provided class materials

Attendees will receive a PDF copy of the class presentation slides. The presentation materials are copyrighted by ikeGPS with permissions from McGraw Hill LLC. Class materials are reserved for class attendees only and may not be duplicated.

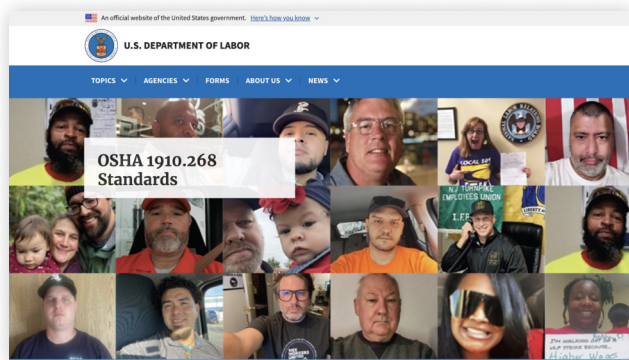


# Class Schedule

Day 1 Agenda	
8:00 a.m.	Log in and set up
8:30 a.m.	Welcome and introduction
8:45 a.m.	OSHA 1910.268 Overview and Paragraphs (a-c) <ul style="list-style-type: none"><li>• Introduction</li><li>• Paragraph a - Application</li><li>• Paragraph b - General</li><li>• Paragraph c - Training</li><li>• Recognizing Live Parts</li></ul>
10:15 a.m.	Break (15 min)
10:30 a.m.	OSHA 1910.268 Paragraphs (d-h) <ul style="list-style-type: none"><li>• Paragraph d - Employee protection in public work areas</li><li>• Paragraph e - Tools and personal protective equipment</li><li>• Paragraph f - Rubber insulating equipment</li><li>• Paragraph g - Personal climbing equipment</li><li>• Paragraph h - Ladders</li></ul>
12:00 p.m.	Lunch (1 hr)
1:00 p.m.	OSHA 1910.268 Paragraphs (i-m) <ul style="list-style-type: none"><li>• Paragraph i - Other tools and personal protective equipment</li><li>• Paragraph j - Vehicle mounted material handling devices and other mechanical equipment</li><li>• Paragraph k - Materials handling and storage</li><li>• Paragraph l - Cable fault locating and testing</li><li>• Paragraph m - Grounding for employee protection pole lines</li></ul>
2:30 p.m.	Break (15 min)
2:45 p.m.	OSHA 1910.268 Paragraphs (n-r) <ul style="list-style-type: none"><li>• Paragraph n (Parts 1 &amp; 2) - Overhead lines</li><li>• Paragraph o - Underground lines</li><li>• Paragraph p - Microwave transmission</li><li>• Paragraph q - Tree trimming electrical hazards</li><li>• Paragraph r - Buried facilities, communication/power lines</li></ul>
4:15 p.m.	Adjourn

# External resources for your training

Attendees are encouraged (but not required) to have a copy of the OSHA 1910.268 Standards.



## OSHA 1910.268 Standards

Visit [OSHA.gov](https://www.osha-slc.gov) >

Bring this class to your organization

Get a Quote



Find more NESC® or OSHA classes IKE offers

[See more classes](#)



329 Interlocken Parkway,  
Suite 120, Broomfield, CO 80021

+1 303-222-3218

[www.ikegps.com](https://www.ikegps.com)